



**St Ralph
Sherwin**
Catholic Multi Academy Trust



Saint Benedict
Catholic Voluntary Academy

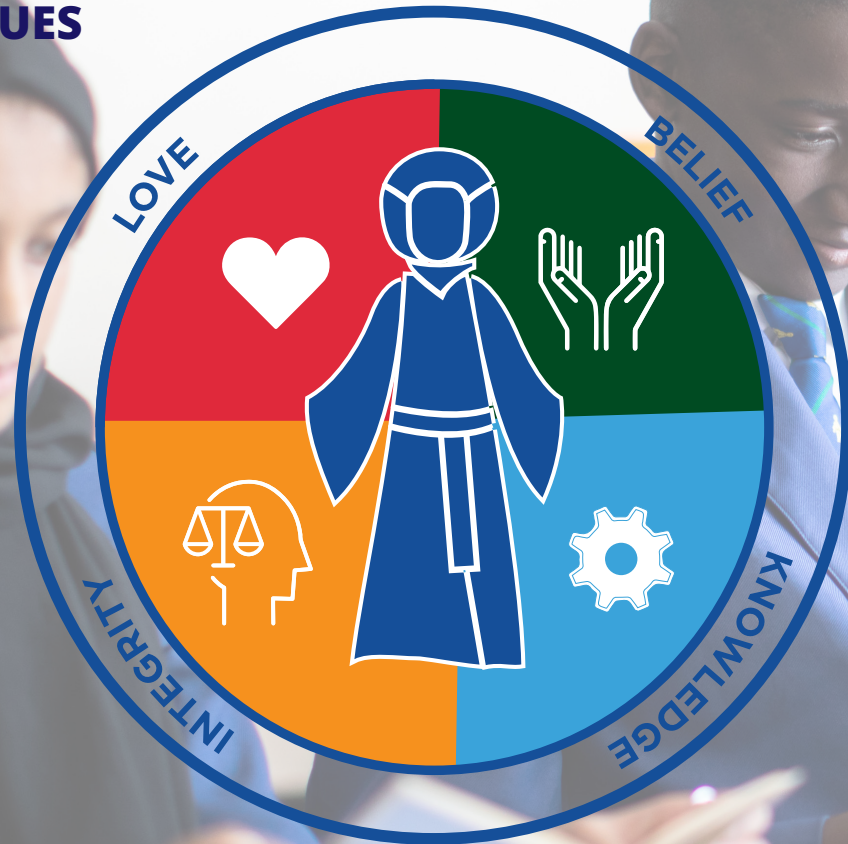


"Safeguarding is effective and leaders have swiftly ensured that a culture of vigilance has become firmly established. Pupils say that they feel safe," **Ofsted.**

OUR MISSION

**'Be who God meant you to be and you will set the world on fire' –
Saint Catherine of Siena**

OUR VALUES



Welcome

Saint Benedict is a vibrant, progressive and oversubscribed school. We believe high quality teaching coupled with excellent pastoral support are key to enabling our pupils to make exceptional progress.



By offering the highest quality of education possible, including a broad range of experiences aimed at developing the whole child, each of our pupils will grow in their faith.

As a Catholic school, it is our vision for every child to be nurtured in a safe and happy environment. We will support and guide each of our children to be who God intended them to be.

Central to this are our values - everything we do is underpinned by love and the belief we have in our children - rooting all we do in the teachings and examples of Jesus Christ and the values of the Gospel.

We celebrate diversity and build resilience at Saint Benedict, preparing our pupils for life in modern

Britain through a robust Personal Development Curriculum. We place a strong emphasis on the relationship between home and school, the foundations of which are established by our Form Tutors who work hard to create a strong sense of family.

Our GCSE results have risen year on year, placing us among the highest achieving schools in Derby and our most recent Ofsted inspection graded the school as Good in every category.

We have a thriving Sixth Form whose A Level results place us amongst the highest of any Post-16 provider in the city and the Diocese. We are also part of the St Ralph Sherwin Catholic Multi Academy Trust, which only serves to make our school community even stronger.

Please take the opportunity to come and have a look at our wonderful school and community - one I sincerely hope you choose to become a part of.

**Hazel Boyce
Headteacher**

Our Trust Family

We are immensely proud of our academies and, although we all work in different contexts, we share the common goal to give every child an excellent Catholic education.



As a single Trust, we are able to share expertise across our academies so that children in both primary and secondary education can access a high quality of expertise and a carefully planned learning experience, enabling everyone to thrive, regardless of their starting points.

Our Trust was formed in September 2018 to preserve, maintain and develop Catholic education in the areas served by our academies, and is one of four Multi Academy Trusts within the Diocese of Nottingham.

We are committed to providing the highest quality of education for every child and young person in our care. For us it is a wonderful opportunity, indeed a privilege, working with a team of over 1,200 staff and in excess of 200 volunteers to shape the future of Catholic education for more than 8,000 children and young people across the Trust.



St Ralph
Sherwin
Catholic Multi Academy Trust

Inspired by the life, message and example of Jesus Christ and in the words of our patron, St Ralph Sherwin, doing this “today rather than tomorrow” is our aim, providing extensive continuing professional development for our staff to grow and develop so that, as role models to the children they teach, we encourage a culture of lifelong learning.

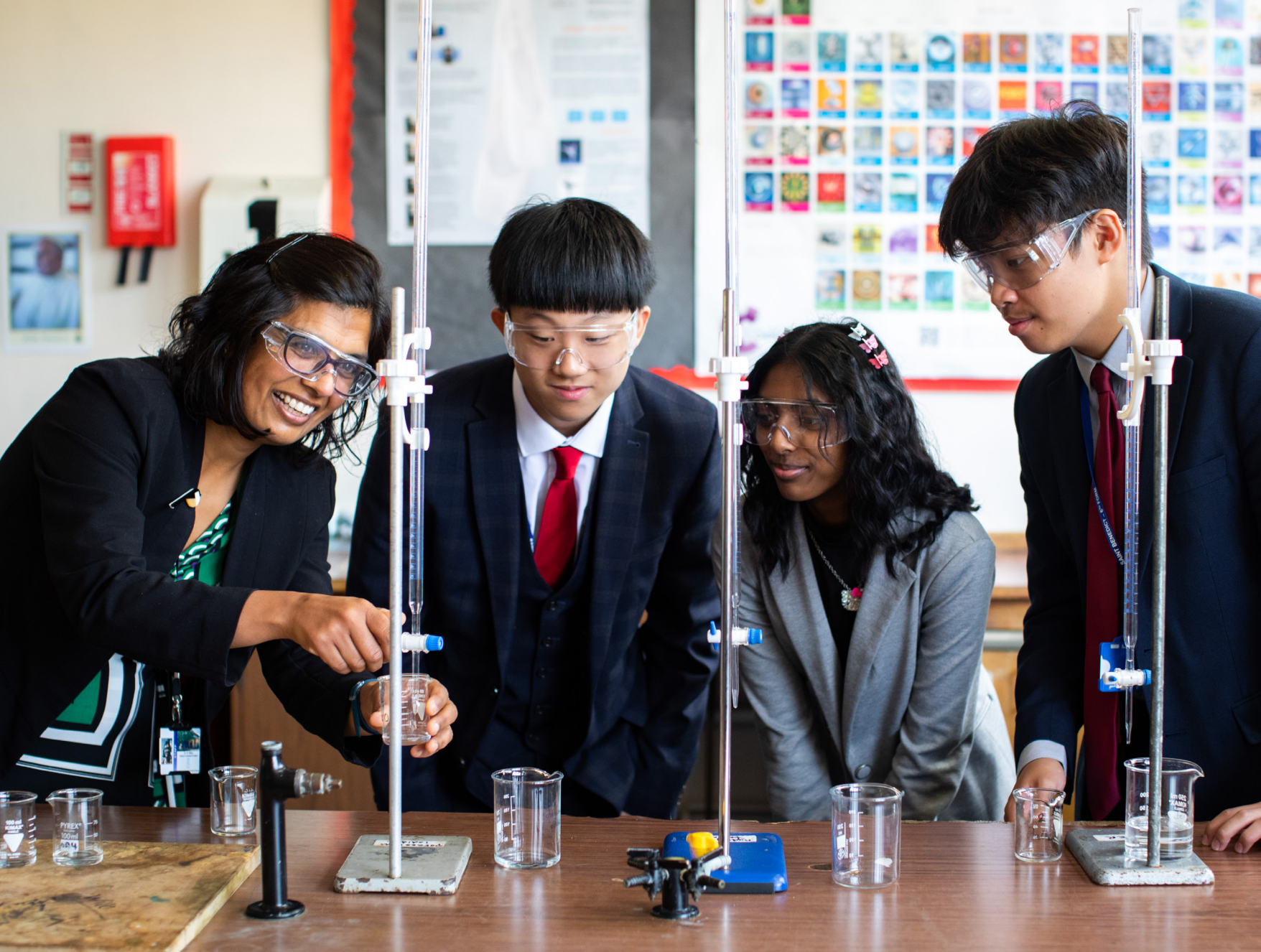
“ Today rather than tomorrow ”

As a family of Catholic academies, we see every child created in the likeness of God, with a mission to make the world a better place. In order to achieve this, we know we must not only offer every child the very best education possible, but more than this, that we must instil in every one of our pupils a deep sense of love and service to others. As parents, you can be assured that we will care for your children as if they were our own and that we will shape and challenge them to go out and transform the world.

A handwritten signature in black ink, likely belonging to Kevin Gritton, the CEO of the trust.

CEO Kevin Gritton





Striving for excellence and enabling all to achieve

We believe that every child is capable of achieving above and beyond the national expectation of them and we work tirelessly, staff and students alike, to ensure that this happens.

As a result of this ambition the school achieves well above the local and national averages in terms of the qualifications our students leave us with and we have been improving consistently in recent years.

In 2022 the school's Attainment 8 score, which is a key measure of results across all subjects, rose to 50.7, up from 48.6 in 2019. A total of 66% of pupils achieved 4 or above in both English and Maths, up from 59% in 2019 and 46% achieved 5 or above in English and Maths, up from 39% in 2019.

The school also saw a big rise in the percentage of grades at 7-9, with 27% of all grades at 7 or above, up from 22% in 2019 and 46% of all grades 6 or above. We are also particularly proud of our pupils with Special Educational Needs who achieved an Attainment 8 score of 38.6, a massive rise from 29.8 in 2019.

According to most recent (2019) performance tables, A-level value added is +0.23 and the second highest in the city.

We believe in being ambitious for all students, from the most able to those who require additional support, ensuring the learning needs of all of our children are met.

We are also proud to have our own Enhanced Resource Base, which supports visually impaired and physically impaired children.

Setting challenging targets and instilling a sense of belief that anything is possible results in students who continually strive for success and who understand that achievement is far more about hard work, persistence and learning from failure than it is about pure ability.



"Teachers have strong subject knowledge that they use enthusiastically to engage pupils in a variety of interesting learning activities, which pupils say they value,"
Ofsted.



"Pupils behave well. They are polite, smart and courteous. Pupils understand the values of the school and demonstrate this in the way that they interact and care for one another," **Ofsted.**

Caring for your child

As a larger school, we have the capacity to offer a wide range of experiences to our children but students also feel part of a much smaller 'family' with their personal tutor and team of staff on hand to help.

In addition to this we have a wide range of support for our students from our full-time Lay Chaplain, Nurture Provision and Enhanced Resource Base. This means that the needs of every child can be catered for.

Students are based in Year groups to ensure consistency is established with all pupils, to allow an age appropriate pastoral curriculum to be delivered in tutor time and to ensure tutor time is used to maximum effect, allowing both pupils and tutors to focus their efforts on only one year group, one message. Heads of Year work with Pastoral Support Assistants whose role is dedicated to that Year group. This allows for greater parental contact, swifter identification of pupils who are absent and patterns of behaviour. Any needs can also be quickly spotted and addressed.

Whether a young person needs additional work, help with organisation or support through a difficult time in their lives, all children benefit from having a caring and dedicated team around them.



Working with our parents and carers

We will work in partnership with you, our parents and carers, and keep you well informed about your child's progress so that you are clear in the ways you can support them.

- We will regularly report your child's progress to you, setting ambitious targets for them but supporting them closely in achieving these.

- We will organise additional information events for you at important stages throughout their time at school, assisting you to make important decisions with them.

- We will help you understand what kind of work they will be set and how you can support your child.

- We will also help you to support your child through important times of transition, from primary to secondary and from secondary to Post-16 education.



"There are strong and positive relationships between pupils and staff. Pupils respond promptly to instructions and they work well independently and in groups to support each other's learning," **Ofsted**.

Listening to our students and developing leadership potential

At Saint Benedict we believe strongly that by being listened to and having a key role to play in terms of how their school is run, all students gain a strong sense of ownership and pride in their school.

We achieve this in a number of ways:

- Our Student Parliament meets regularly and has representatives of all ages. This group plays a key part in whole school decision making and is one of the first groups we consult with on new ideas for school.

- Led by our Head Boy and Girl, our Sixth Form Student Leadership Team also meet during the year to share their ideas for improving the experience of all children in the school.

- Listening to our children and working with them permeates all that we do.

Students are involved in the decisions made on every staff appointment and regularly have the opportunity to share their ideas and views. Giving young people a voice also gives them a sense of responsibility, helping them to learn how to have a voice in society when they leave us and a belief that they can change the world to make it a better place.





"A distinctive feature of pupils' behaviour in this school is their sense of community and the care that they extend to one another," **Ofsted**.



Developing the whole child

We believe that access to a broad range of experiences outside of the curriculum is a key part of developing the qualities which will help our students to lead fulfilling and happy lives.

The school has a very active faith life with prayer and liturgy part of the everyday routine.

Opportunities to experience life-changing retreats and visits such as residential experiences, our trip to Lourdes and our link with Arusha in Tanzania, give young people opportunities to develop, not only their faith but their understanding of the world and the part they play in it.

We also run a thorough programme of careers education which begins in Year 7 with university visits and continues with our Careers Fair and regular World of Work sessions with our Alumni.

Admissions

As a Catholic academy our first priority in considering new pupils is those who are Catholic, although we welcome children from different faiths and none, ensuring every child feels fully included in our work and prayer life. Governors will comply with parental preference unless the academy is oversubscribed in which case a published criteria is applied.

An awareness of the need to be there to support the poor in society also plays a vital part in the mission of our school. Students are very aware of this fact and raise funds for a number of charities.

Students also visit care homes and perform active service in the community. We offer a wide range of extra-curricular opportunities from an excellent school show and many other musical and dramatic productions and we achieve a high level of success in sporting events.

The academy serves the Catholic population of the City of Derby and surrounding areas. A comprehensive list of those parishes the academy takes from, along with the admissions policy, and other relevant information can be found on the academy website.



"The personal development of pupils, alongside their spiritual, moral, social and cultural development is highly effective. Pupils are well prepared for life in modern Britain," **Ofsted.**





**St Ralph
Sherwin**
Catholic Multi Academy Trust



Saint Benedict Catholic Voluntary Academy,
Duffield Road,
Derby,
DE22 1BP

Tel: 01332 557032
Email: enquiries@ben.srscmat.co.uk
Web: www.stbenedictderby.srscmat.co.uk



@StBenedictDerby



St Benedict Catholic
Voluntary Academy