

Y7 Reproduction Homework Grids

Name: _____

Science Teacher: _____

	Comment
Grid 1.1	
Grid 1.2	
Grid 1.3	
Grid 1.4	
Grid 1.5	
Grid 1.6	
Grid 1.7	
Grid 1.8	



The diagram shows a human sperm cell.

Sperm use their tails to swim to the egg so that fertilisation can take place.

Give **one** other way in which a sperm is adapted for fertilisation. Explain your answer.

.....

.....

.....

.....

A chemical called a hormone, which changes a boy's body, is produced from adolescence onwards.

Where is this hormone produced?

.....

.....

Describe **two** changes caused by this hormone. any **one** from

.....

.....

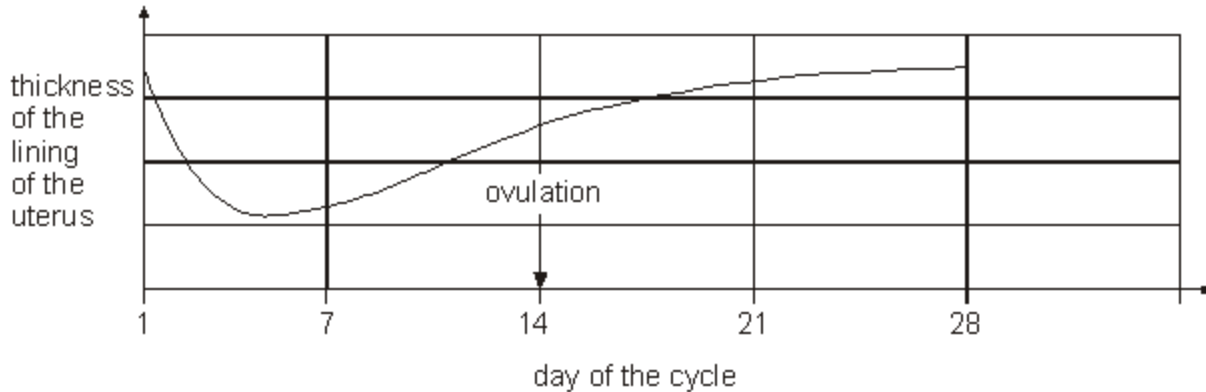
.....

.....

Grid 1.2: Use KO 37 – 40

Due: _____

Diagram 2 is a graph showing how the thickness of the uterus changed over a 28-day cycle.



Why did the thickness of the lining of the uterus decrease between day 1 and day 5 of this cycle?

.....

.....

.....

Suggest which day in this cycle an ovum (egg) is most likely to be fertilised.

Day

What evidence is there for this in the graph?

.....

.....

.....

The graph shows that the lining of the uterus builds up again between day 5 and day 14.

Why is this necessary?

.....

.....

.....

.....

Grid 1.3: Use KO 37 – 40

Due: _____

The table below contains descriptions of parts of the human reproductive system. Complete the table to give the name of each part.

name of part	description
	the tube that carries an egg to the uterus
	the organ that produces sperm
	the organ that produces the egg

What is the function of the amniotic fluid around the baby?

.....

.....

.....

.....

.....



Complete the sentences below by filling in the **gaps**.

In humans, normal pregnancy lasts for months.

When the foetus is ready to be born, muscles in the uterus wall start to

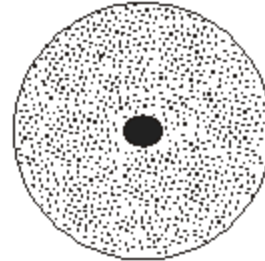
After the baby is born, the
..... connecting the foetus to the mother is cut.

Grid 1.4: Use KO 37 – 40

Due: _____

Cell division	Digestion	Fertilisation
Foetus	Genes	Intestine
Ovary	Ovum (egg)	Sperm
Testis	Uterus	Puberty

Use the words in the box to answer the questions



Cell B

What is the name of cell B?

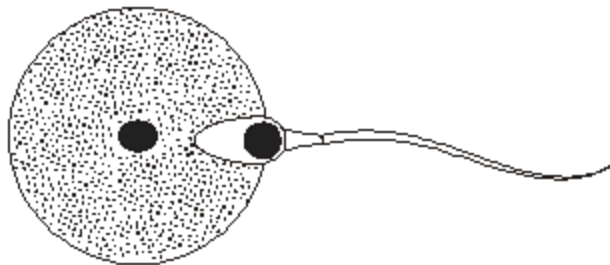
.....

.....

Where is cell B produced?

.....

.....



Process C

What process is shown in C?

.....

.....

Which word means an unborn baby? Choose your answer from the box above.

.....

Where does the unborn baby develop? Choose your answer from the box above.

.....

Grid 1.5: Use KO 37 – 40

Due: _____

When fertilisation takes place, the nucleus of a sperm joins with the nucleus of an ovum (egg).
In which part of the reproductive system does fertilisation normally take place in humans? Circle your answer

Cervix

Ovary

Oviduct

Uterus

Some women have blocked oviducts.
How do blocked oviducts prevent fertilisation taking place?

.....

.....

.....

.....

.....

During sexual intercourse about 250 million sperm are released at a time into the body of a woman.
Why is it necessary to release so many sperm at a time?

.....

.....

.....

.....

.....

Name one useful substance, other than food, which passes from the mother to the unborn baby.

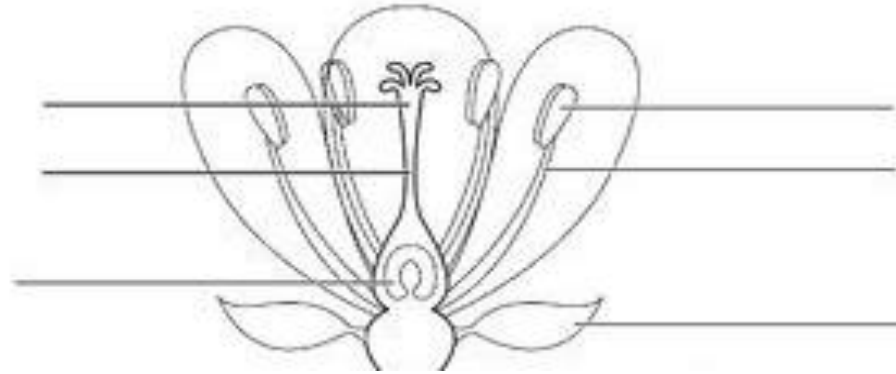
.....

.....

.....

.....

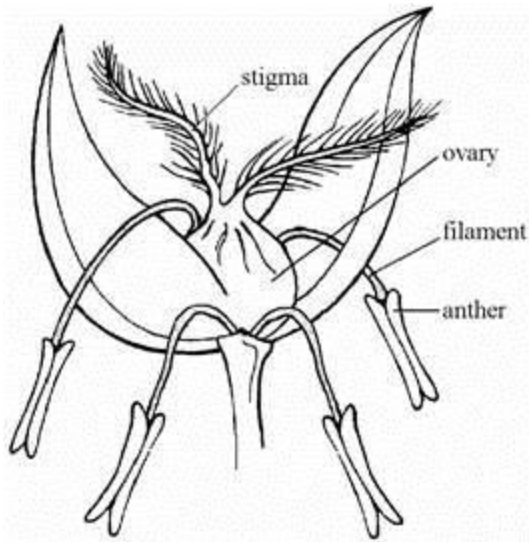
.....



Label the parts of the flower

Male parts of the flower	Role – complete the table
Stamen	
Anthers	
Pollen grain	

Female parts of the flower	Role – complete the table
Stigma	
Ovary	



The drawing shows a single flower of rye grass.

Rye grass flowers are adapted for wind pollination. Explain how **two** features, shown on the drawing, show that the flower is adapted for wind pollination.

In a single flower, anthers and stigmas usually mature at different times.

What is the advantage of this?

.....

.....

.....

.....

.....

Name another method by which the rye grass flowers could be pollinated.

.....

.....

.....

.....

Grid 1.8: Use KO 37 – 40

Due: _____

Describe the ways in which pollen can be dispersed.

.....

.....

.....

.....

.....

Describe the ways in which seeds can be dispersed.

.....

.....

.....

.....

.....

Using the internet, find out how the following plants prefer to pollinate:

Coconut tree

Strawberries

Rice

Oats

Using the internet, find out how the following plants prefer to disperse their seeds:

Coconut tree

.....

Strawberries

.....

Rice

.....